

CLOUD ADS

No. 7/3, Cloud Ads, 5th Street,
Chowdary Nagar,
Valasaravakkam,
Chennai, Tamil Nadu - 600 087.

***CORPORATE
SUSTAINABILITY REPORT***

(01st April, 2025 to 31st March, 2026)



Form No : CA/ESG/F-690

Issue No : 02

Revision No: 00

Date : 24th April, 2026

01 Introduction

Message from the Managing Director	3
About Us	5
Introduction	8
Statement of Use	9
ISO Certifications	10
SDG	11

02 GRI: General Disclosures

GRI 2-1: Organizational Details	26
GRI 2-2: Entities Included in Sustainability Reporting	26
GRI 2-3: Reporting Period, Frequency and Contact Point	26
GRI 2-4: Restatements of Information	26
GRI 2-5: External Assurance	26
GRI 2-9: Governance Structure	26
GRI 2-23: Policy Commitments	26
GRI 2-29: Approach to Stakeholder Engagement	26
GRI 3-1: Process to Determine Material Topics	26
GRI 3-2: List of Material Topics	26
GRI 3-3: Management of Material Topics	27

04 ESG Activities

Governance	28
Environment	30
Social	33
Sustainability Performance Data	36
GRI INDEX :This report is prepared in accordance with GRI standards (2021).	38
Independent Assurance Statement	40



Message from the Managing Director

At **CLOUD ADS**, we are driven by a passion for marketing, branding, and innovation. As a trusted visual merchandising and advertising solutions provider, we help businesses create meaningful connections with their customers through impactful communication and high-quality marketing collateral.

Our commitment has always been to deliver creative, reliable, and customer-focused solutions that enhance brand visibility and support business growth. By combining industry expertise with advanced printing and reproduction capabilities, we strive to provide exceptional value and exceed client expectations in every project we undertake. As we move forward, sustainability remains an integral part of our business strategy. We are committed to integrating Environmental, Social, and Governance (ESG) principles into our operations by promoting resource efficiency, responsible sourcing, employee well-being, and ethical business practices.

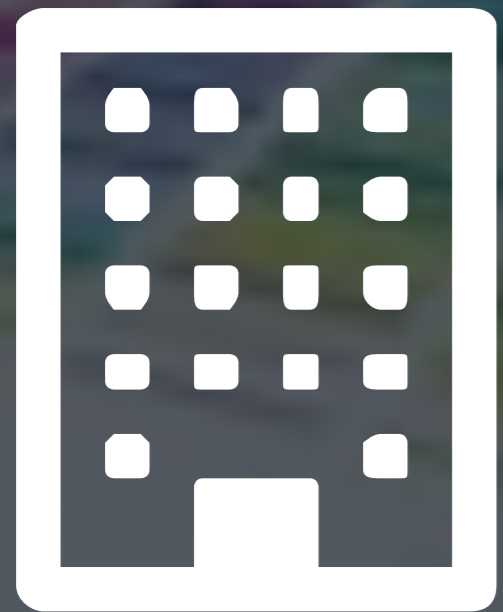
Through innovation, quality, and sustainability, CLOUD ADS will continue to support our customers' evolving marketing needs while creating long-term value for all stakeholders. We thank our clients, employees, suppliers, and partners for their continued trust and support as we work together towards a more sustainable and successful future.

Sincerely,

Managing Director,

CLOUD ADS INDIA





Cloud Ads

Your partner in all your advertising & marketing needs



About Us



1

Visual merchandising solution provider with a passion for marketing and branding.

2

We deliver innovative solutions for all advertisement and marketing needs and help businesses connect with their customers through our stunning marketing collateral.

3

Providing quality solutions has been our endeavor every single time.

Our Mission & Vision



Our Vision

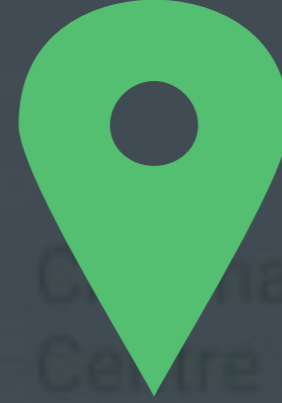


ZERO WASTE Make a conscious choice in the use of our time, materials, assets, resources, skills and intellectual property.

Our Mission




EXCEED EXPECTATIONS Deliver the best Customer experience each and every time.



Cloud Ads

Main Office: #9, Lakeview Street,
West KK Nager, Chennai, Tamil
Nadu 600078



Cloud Ads

Branch Office: #32/43, New No: 43,
First Floor, Bazaar St, KK Nagar
West, KK Nagar, Chennai, Tamil
Nadu 600078

Contact Us



Sandhya@cloudads.in



+91-9791039312



www.cloudads.in

Introduction to the Sustainability Report



CLOUD ADS is committed to conducting its business operations in a responsible, ethical, and environmentally sustainable manner. As a company engaged in printing and reproduction of recorded media in India, the organization recognizes the importance of integrating Environmental, Social, and Governance (ESG) principles into operational activities, stakeholder engagement, and long-term business strategy. This Sustainability Report reflects CLOUD ADS' ongoing commitment to sustainable development, responsible resource management, employee well-being, ethical governance, and climate action.

The report has been prepared with reference to the Global Reporting Initiative (GRI) Standards and incorporates sustainability information aligned with internationally recognized reporting frameworks, including ISO 14064-1:2018 for greenhouse gas accounting and the GHG Protocol Corporate Accounting and Reporting Standard. The report covers the reporting period from April 2025 to March 2026 and includes disclosures related to environmental performance, energy consumption, greenhouse gas emissions, waste management, employee development, occupational health and safety, information security, governance practices, and sustainable procurement initiatives.

As part of its ESG integration journey, CLOUD ADS has implemented multiple sustainability initiatives aimed at reducing environmental impacts and improving operational efficiency. These initiatives include energy-efficient lighting systems, paper recycling programs, digital workflow adoption, employee climate awareness training, waste segregation systems, and preventive maintenance practices to reduce resource consumption and operational emissions. The organization also promotes responsible business conduct, ethical governance, supplier sustainability engagement, and employee welfare programs to support long-term sustainable growth.

This report demonstrates the organization's commitment to transparency, accountability, and continuous improvement in sustainability performance. It also serves as a communication tool for stakeholders including customers, employees, suppliers, business partners, regulatory authorities, and sustainability auditors. Through regular sustainability reporting and ESG monitoring, CLOUD ADS aims to strengthen stakeholder trust, identify opportunities for improvement, and contribute positively toward environmental protection, social responsibility, and sustainable business operations.

The company recognizes that sustainability is an ongoing journey requiring collaboration, innovation, and responsible decision-making across all levels of the organization. CLOUD ADS remains committed to improving its sustainability performance, reducing greenhouse gas emissions, enhancing resource efficiency, strengthening governance systems, and supporting long-term climate and ESG objectives in alignment with global sustainability expectations.



Statement of Use (GRI 1-5)



This report is prepared in accordance with GRI standards (2021) for the reporting period April 2025 to March 2026.



ISO Certificates

CLOUD ADS maintains certified ISO 14001:2015 Environmental Management System (EMS) and ISO 45001:2018 Occupational Health and Safety Management System (OHSMS). These certifications demonstrate commitment to environmental protection, workplace safety, legal compliance, risk management, and continual improvement. They support sustainable operations, employee well-being, and responsible business practices across the company's marketing and signage manufacturing activities.



Sustainable Development Goal





Infrastructure

What we have



How We Are Equipped



Hp Latex 360 & Eco-solvent Printers

Our Latex 360 printer is capable of high quality, eco-friendly prints featuring odorless technology offers scratch resistance on practically any surface.

Our Eco-Solvent Printers are equipped with Konica headers to deliver exceptional quality and classy finish



Dedicated Manufacturing & Fabrication Unit

Dedicated manufacturing unit which can cater to all branding needs for outdoor and indoor activations. 10000 Sq. Ft office space capable of catering to large projects involving massive sizes and different substrates.



Creative Design Studio

Our design studio equipped with craftsmen and tools to produce creative design portraying larger than life images.

Our Infrastructure

Infrastructure

With our main office sprawling across 10000 Sq. Ft we have the ability to cater to large voluminous projects with aggressive timelines. With more customers demanding strict time boundaries we realize the key to delivering in our industry is to be equipped with the required machineries, manpower and infrastructure.

Print Manufacturing

- Hp Latex 360
- Solvent – Large Format
- Eco- Solvent – Large Format
- Automated Lamination Machine
- Plotter Machine

LED Manufacturing

- Aluminum Bending Machine
- Liquid Acrylic Curing Machine
- CNC Router





CSR Report

Doing the Right Thing

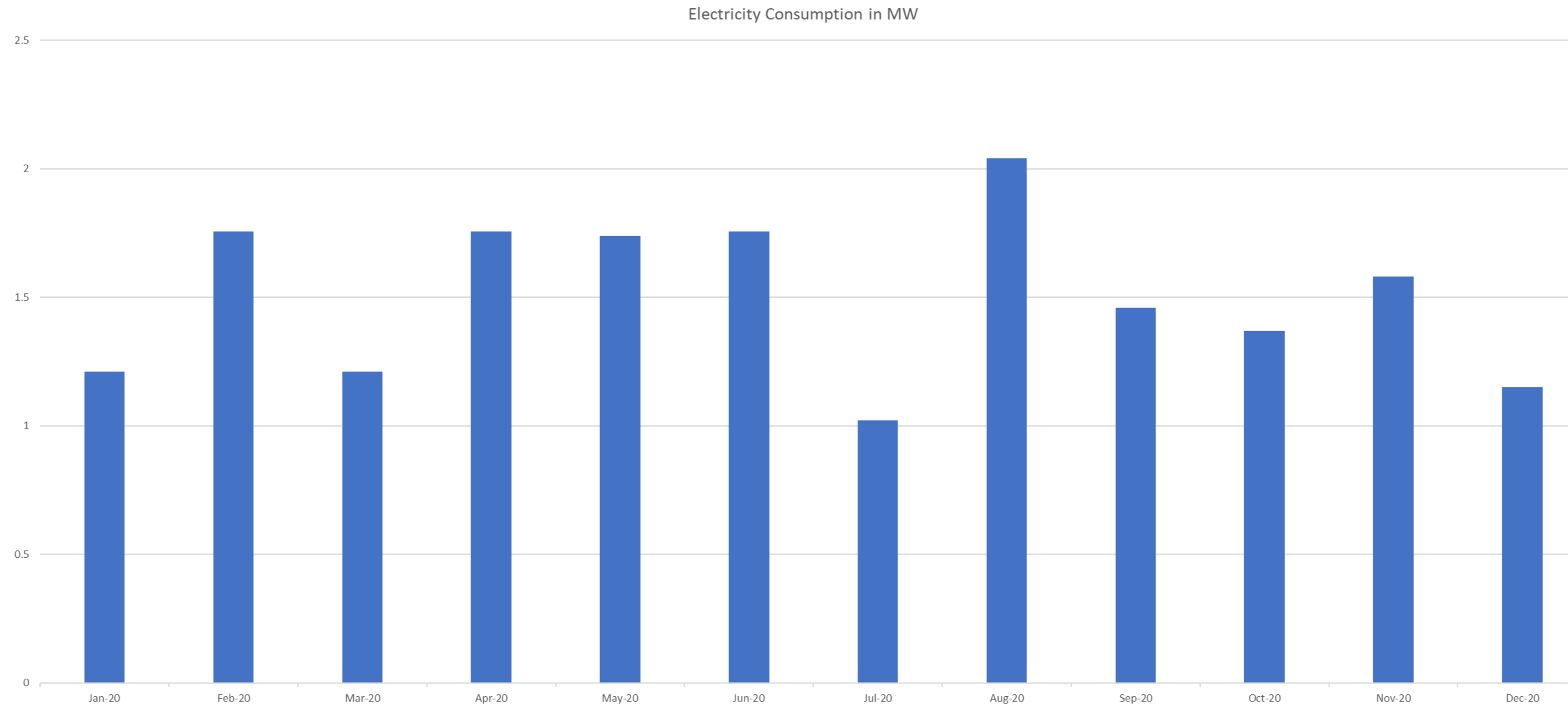


Electrical Consumption Report

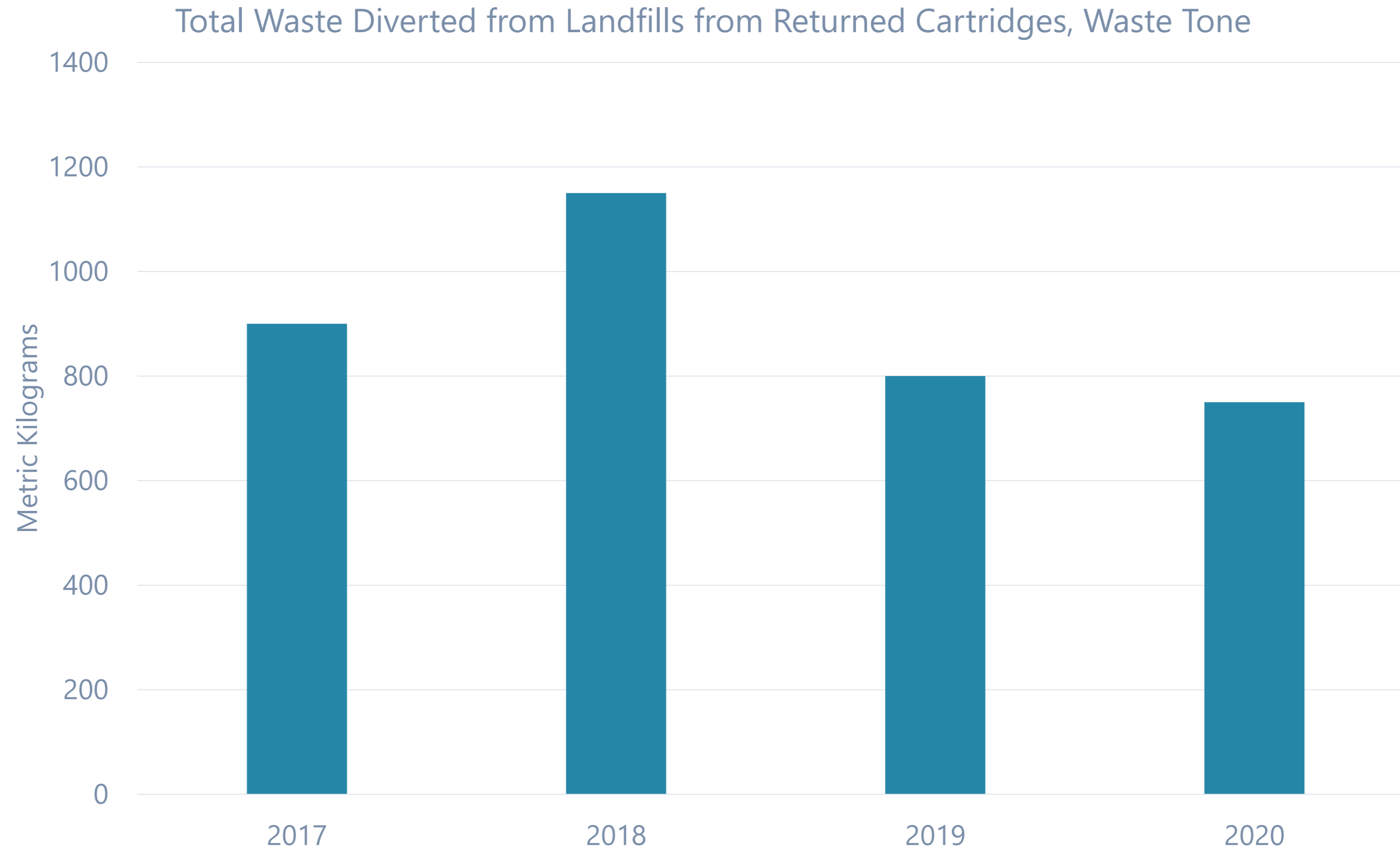


2020

Chart data of electrical consumption in 2020 in MW



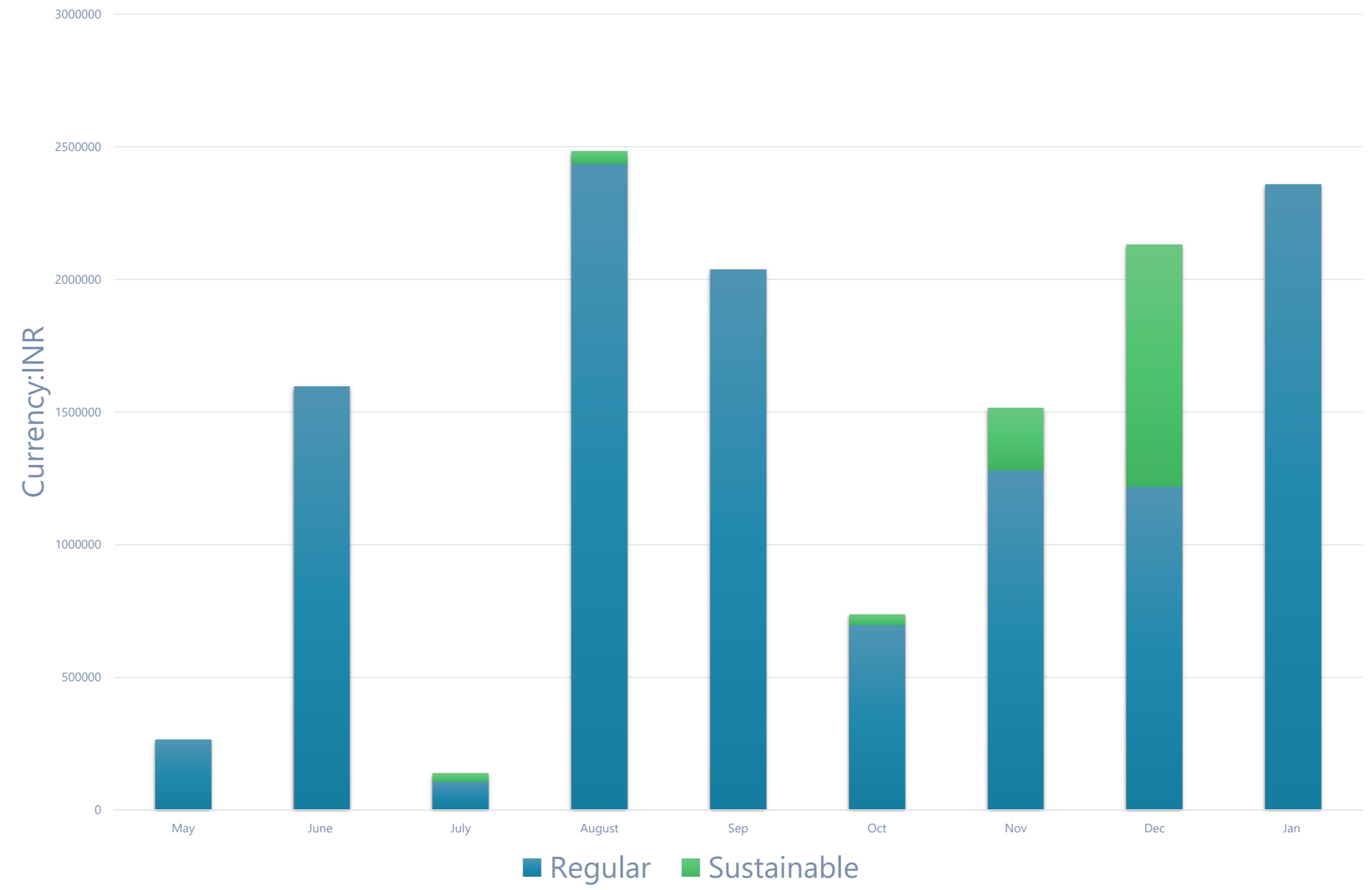
Waste Reduction



Sustainable vs Regular Sales Report



Sales Report for FY 2020-2021



Cloud Ads have started moving towards sustainable production and aim to increase sustainable product in the coming months



Annual Employee Report

What We Are



Employee Demographics



Employees Training Report



Employee Name	Training Name	Period	Hours Spent	Skillset
Rajkumar	Adobe Illustrator - Beginner	Apr-20	180	Design
Rajkumar	Adobe Coreldraw - Advanced	Jul-20	120	Design
Rani Mishra	Microsoft Office - Excel Tips	Jun-20	8	Reporting
Rani Mishra	Effective Communication	Aug-20	12	Communication
Farlin Beula	Effective Communication	Dec-20	12	Communication
Ravikumar	Printing & Proofing Basics	Nov-20	160	Printing
Pachaiappan	Printing & Proofing Advanced	Oct-20	200	Printing
Ajith Kumar	Adobe CorelDraw - Beginner	Jul-20	120	Design
Sandhya	Accounting & Finance for MSME	Sep-20	360	Accounting
Praveena	Effective Communication	Dec-20	12	Communication
Praveena	Microsoft Office - Excel Tips	Jun-20	8	Reporting
All Employees	Anti Sexual harassment Training	Jun-20	96	Ethics
All Employees	Safety Training & Drill	Jul-20	96	Safety
All Employees	Environment Policy & Energy Consumption	Aug-20	96	Environment



Safety Report

How we Prevent



Employees Accident Report



Date & Hour of Accident		Location	Employee Name	Details	Type	Recovery Plan	Loss of work Hours	Investigation Details
14-Aug-20	11:00 AM	Office Premises	Pachaiappan	Employee cut his index finger while cutting the foam boards	Minor	First Aid done in office premises and taken to hospital for further treatment.	Employee took 1 day off and lost 8 hours of work	Accident happened due to distraction. Safety training conducted to avoid such issues
15-Dec-20	2:00 PM	Road	Ajith Kumar	Employee met with a minor accident on the road	Minor	First Aid done in office premises and taken to hospital for further treatment.	Employee took 2 days off and lost 16 hours of work	Employee dashed against another rider and sustained minor injuries. Accident happened due to negligent driving. Safety training conducted to avoid such issues

Why Us?



- **Delivering exceptional quality. Every time.**

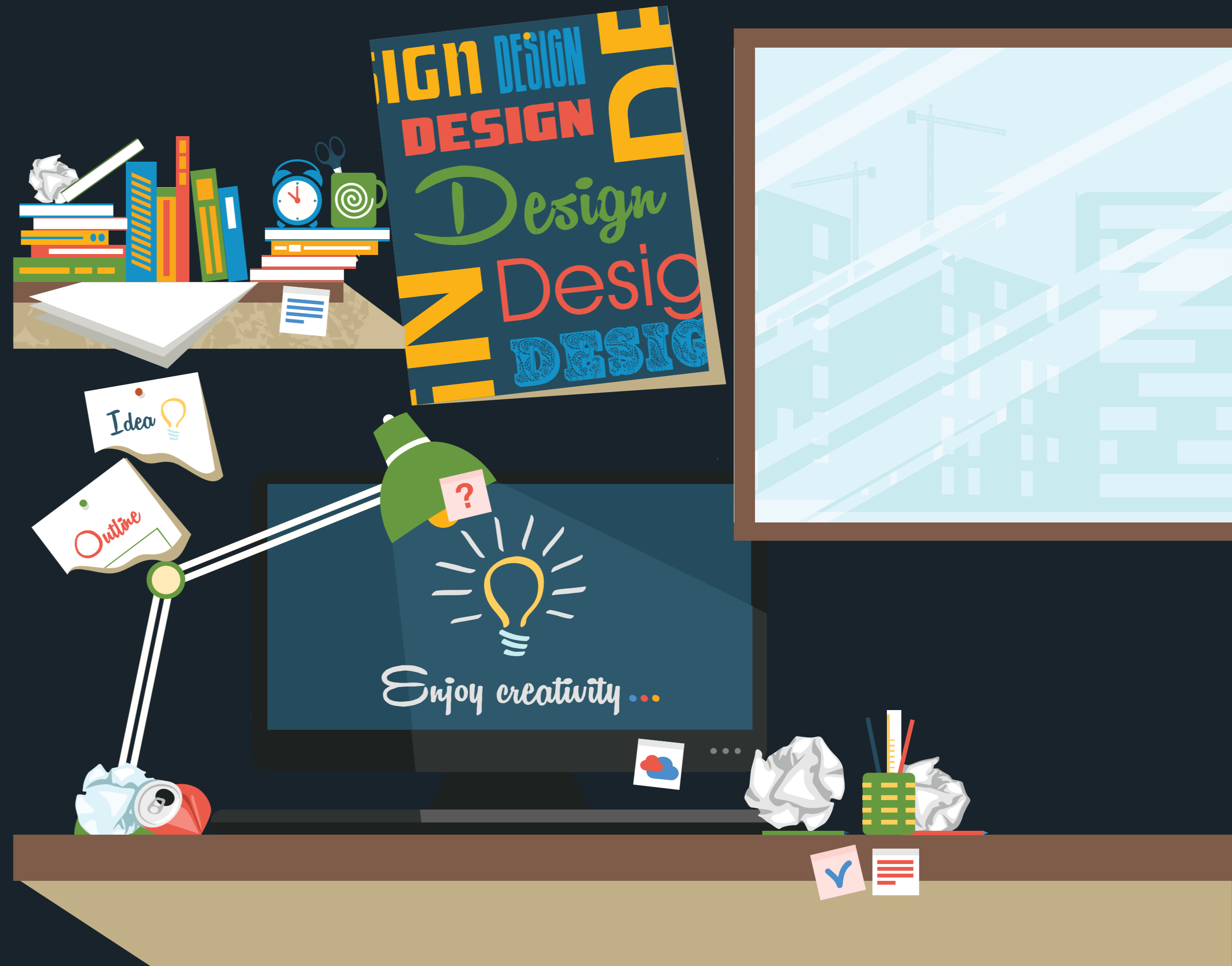
We invest in long term client partnerships, with the commitment to evolve and push boundaries together. From design, engineering and manufacture, through installation and support, we are with you every step of the way.

- **Innovation backed by passion.**

With a passion for marketing and branding, we help businesses connect with their customers. Our experience shows us there's nothing like rigorous research, a willingness to listen to our clients and the courage to do things differently.

- **Our Designs Speak**

Our designs are boisterous and bold. They shout your name to the world. We will help you execute an engaging personalized solution for every customer.



Organizational Details (GRI 2-1)

Legal Name: CLOUD ADS

Location of its headquarters:

NO. 7/3, Cloud Ads, 5th street,
Chowdry Nagar, Valasaravakkam
Chennai - 600087
Tamil Nadu, India

Countries of operation: INDIA



Organizational Details (GRI 2-1)

CLOUD ADS is a Chennai-based printing and media reproduction company integrating ESG principles into its operations. The organization provides commercial printing, branding, signage, and communication solutions while promoting energy efficiency, waste management, employee welfare, ethical governance, and customer engagement. CLOUD ADS continuously strengthens sustainable business practices and environmental responsibility across operations.

Entities Included in Sustainability Reporting (GRI 2-2)

The sustainability report covers all operations under the operational control of CLOUD ADS in Chennai, Tamil Nadu, India. Reporting includes printing operations, office activities, logistics, electricity usage, waste management, employee welfare, information security, procurement, and ESG governance for FY 2025–2026. Material sustainability topics were identified through operational reviews and stakeholder assessments.

Reporting Period, Frequency and Contact Point (GRI 2-3)

This sustainability report covers the period from 01 April 2025 to 31 March 2026. CLOUD ADS publishes annual ESG disclosures to promote transparency and continuous improvement. The report communicates environmental, social, and governance performance using data collected from utility bills, operational records, procurement documents, waste records, training reports, and internal sustainability monitoring systems.

Restatements of Information (GRI 2-4)

CLOUD ADS ensures transparency and reliability in sustainability reporting through structured data management and validation processes. Revisions or restatements are made when updated methodologies, operational data, emission factors, or verification processes identify material changes. Reporting incorporates operational records, utility bills, supplier documents, employee data, and refined calculations to enhance disclosure accuracy and quality.

External Assurance (GRI 2-5)

CLOUD ADS prepared this sustainability report in accordance with GRI Standards, ISO 14064-1:2018, and GHG Protocol principles. Internal reviews, cross-verification, and management validation improved reporting accuracy and consistency. Disclosures were supported by operational, procurement, employee, invoice, and utility data, with future external assurance details to be transparently disclosed for stakeholder confidence.

Governance Structure and Composition (GRI 2-9)

CLOUD ADS operates through centralized management functions including administration, operations, procurement, finance, maintenance, ESG coordination, and employee management. Governance responsibilities include sustainability monitoring, workplace safety, information security, ethical business conduct, supplier engagement, and regulatory compliance. Structured procedures support accountability, operational efficiency, risk reduction, transparency, employee welfare, and continuous sustainability improvement.

Policy Commitments (GRI 2-23)

CLOUD ADS maintains policies and procedures promoting ethical business conduct, anti-corruption practices, workplace safety, information security, equal opportunity, and responsible procurement. Employees follow organizational values and legal requirements through awareness programs, governance controls, and whistleblower mechanisms. Ethical governance strengthens transparency, stakeholder trust, operational integrity, regulatory compliance, and long-term sustainable business performance.

Approach to Stakeholder Engagement (GRI 2-29)

CLOUD ADS engages employees, suppliers, customers, and partners through training, consultations, feedback systems, and operational discussions to strengthen sustainability performance. Transparent communication, responsible sourcing, safety awareness, and ESG collaboration support continuous improvement, stakeholder trust, ethical governance, and sustainable business operations across the organization.

Process to Determine Material Topics (GRI 3-1)

CLOUD ADS identified material sustainability topics through operational reviews, stakeholder engagement, ESG assessments, legal compliance requirements, and business priorities. Key focus areas include emissions, energy, waste, employee safety, information security, ethics, procurement, and workforce development. Materiality assessments support ESG strategy, operational improvements, risk management, reporting transparency, and long-term sustainability planning.

List of Material Topics (GRI 3-2)

CLOUD ADS identified key material topics through stakeholder engagement and business impact assessment. Material topics include Energy Management, Greenhouse Gas Emissions, Waste Management, Occupational Health and Safety, Employee Well-being, Human Rights, Ethics and Compliance, Sustainable Procurement, Customer Satisfaction, and Data Privacy. These topics guide sustainability strategy and reporting.

Management of Material Topics (Future Outlook) (GRI 3-3)

CLOUD ADS will continue strengthening ESG integration through energy efficiency, greenhouse gas reduction, waste minimization, sustainable procurement, employee development, and ethical governance initiatives. Future priorities include renewable energy adoption, digital transformation, supplier ESG engagement, enhanced climate reporting, and continuous improvement of sustainability performance aligned with stakeholder expectations and long-term business resilience.

Most Significant Environmental Topics

1. Climate Change & GHG Emissions Reduction
2. Energy Efficiency Across Printing Operations
3. Renewable Energy Adoption and Integration
4. Sustainable Paper Sourcing and Procurement
5. Waste Reduction Recycling and Circularity
6. Environmentally Friendly Inks and Chemicals
7. Water Conservation and Efficient Usage
8. Air Emissions Control and Management
9. Sustainable Packaging Materials and Solutions
10. Biodiversity Protection and Resource Conservation

Most Material Social Topics

1. Employee Health Safety and Wellbeing
2. Continuous Employee Training and Development
3. Diversity Equity and Inclusion Promotion
4. Workplace Harassment Prevention and Awareness
5. Human Rights Protection Across Operations
6. Employee Engagement and Satisfaction Enhancement
7. Fair Labor Practices and Conditions
8. Community Development and Social Responsibility
9. Responsible Supply Chain Labor Standards
10. Customer Satisfaction and Product Responsibility

Most Material Governance Topics

1. Business Ethics Integrity and Compliance
2. ESG Governance Oversight and Accountability
3. Regulatory Compliance and Legal Adherence
4. Anti-Corruption and Anti-Bribery Management
5. Enterprise Risk Management and Resilience
6. Data Privacy and Information Security
7. Stakeholder Engagement and Transparent Communication
8. Sustainable Procurement Governance and Monitoring
9. Transparent ESG Reporting and Disclosure
10. Business Continuity Planning and Preparedness

A hand is shown from the right side, pointing its index finger towards the center of the image. The background is a dark blue, futuristic digital interface. In the center, the word "GOVERNANCE" is written in large, white, bold, sans-serif capital letters. The text is set against a glowing blue circular graphic that resembles a target or a data visualization. The graphic consists of concentric circles and radial lines, with a bright blue light source at the center. The overall aesthetic is high-tech and professional.

GOVERNANCE

Direct Economic Value Generated and Distributed (GRI 201-1)

CLOUD ADS generates economic value through responsible operations, employment creation, supplier engagement, and sustainable service delivery. Financial resources support employee compensation, operational investments, technology improvements, ESG initiatives, infrastructure maintenance, and business continuity. The organization promotes long-term financial resilience through ethical governance, operational efficiency, and sustainable business management practices.

Climate-Related Risks (GRI 201-2)

CLOUD ADS evaluates climate-related operational and financial risks including energy costs, fuel usage, supply chain disruptions, and environmental regulations. Renewable energy, operational efficiency, digital workflows, and sustainable procurement initiatives help reduce risks while creating opportunities for cost savings, ESG improvement, and long-term sustainable business growth.

Proportion of Spending on Local Suppliers (GRI 204-1)

CLOUD ADS promotes responsible procurement by engaging suppliers for materials, logistics, equipment, and operational services. Preference is given to reliable and compliant suppliers, including local vendors where feasible. Local sourcing supports supply chain efficiency, stakeholder relationships, community contribution, reduced transportation dependence, and integration of sustainability and ESG procurement practices.

Operations Assessed for Risks Related to Corruption (GRI 205-1)

CLOUD ADS maintains procedures to identify, assess, and manage corruption-related risks across operations, procurement, finance, and administration. Governance controls support ethical conduct, transparent decision-making, vendor oversight, fraud prevention, and compliance monitoring. Employees and stakeholders are encouraged to follow policies addressing bribery, conflicts of interest, and responsible business behavior.

Communication and Training About Anti-Corruption Policies and Procedures (GRI 205-2)

CLOUD ADS communicates anti-corruption expectations through employee awareness, governance controls, ethical procedures, and whistleblower mechanisms. Employees receive guidance regarding bribery prevention, conflict-of-interest management, and responsible business conduct. Ethical governance practices strengthen transparency, accountability, compliance, stakeholder trust, and long-term organizational sustainability.

Legal Actions for Anti-Competitive Behavior, Anti-Trust, and Monopoly Practices(GRI 206-1)

CLOUD ADS follows fair competition practices and complies with applicable commercial regulations. The organization promotes ethical market conduct, transparent business practices, responsible supplier relationships, and fair customer interactions. No significant legal actions regarding anti-competitive behavior or monopoly practices were identified during the reporting period.

Approach to Tax(GRI 207-1)

CLOUD ADS maintains responsible accounting and taxation practices aligned with applicable legal requirements. Financial controls, operational records, procurement documentation, and employee payment systems support tax compliance, transparency, audit readiness, ethical governance, and responsible financial management throughout organizational operations and business activities.

Infrastructure Investments and Services Supported (GRI 203-1)

CLOUD ADS invests in energy efficiency, operational upgrades, workplace safety, cybersecurity, and digital systems to improve sustainability and operational performance. Infrastructure investments strengthen productivity, reduce environmental impacts, support employee welfare, improve business continuity, and contribute to long-term ESG-aligned organizational development and operational resilience



ENVIRONMENT



Materials Used by Weight or Volume (GRI 301-1)

CLOUD ADS uses paper, inks, printing consumables, packaging materials, and office supplies for operational activities. During FY2025–2026, approximately 18 tons of paper were consumed. The organization promotes responsible material selection, recycled inputs, efficient resource utilization, waste minimization, and sustainable procurement practices to reduce environmental impacts.

Recycled Input Materials Used (GRI 301-2)

CLOUD ADS encourages the use of recycled paper and sustainable materials to reduce environmental impacts associated with virgin resource extraction and waste generation. Procurement practices evaluate opportunities to increase recycled content while maintaining operational quality, customer requirements, resource efficiency, circular economy principles, and responsible sourcing performance.

Energy Consumption Within the Organization (GRI 302-1)

Energy consumption is a significant operational environmental aspect for CLOUD ADS. During FY2025–2026, the organization consumed approximately 32,500 kWh of purchased electricity supporting printing machinery, HVAC systems, lighting, and office activities. Energy monitoring, maintenance, LED adoption, and conservation awareness support improved operational efficiency.

Reduction of Energy Consumption (GRI 302-4)

CLOUD ADS implements energy reduction measures including LED lighting, equipment maintenance, optimized production scheduling, digital workflows, and employee awareness programs. Internal monitoring supports identification of energy-saving opportunities. Future plans include renewable energy evaluation, rooftop solar feasibility, automation systems, and strengthened energy efficiency initiatives.

Interactions with Water as a Shared Resource (GRI 303-1)

Water use within CLOUD ADS operations is associated with sanitation, cleaning, and routine facility requirements. Although water dependency remains limited, the organization promotes responsible water stewardship through conservation awareness, controlled consumption practices, operational monitoring, facility maintenance, and initiatives aimed at minimizing unnecessary water wastage.

Water Consumption (GRI 303-5)

CLOUD ADS encourages responsible water consumption through employee awareness, housekeeping controls, and facility conservation practices. Monitoring efforts focus on preventing avoidable wastage, identifying leakage risks, and supporting efficient operational behavior. Water management initiatives contribute toward resource conservation, environmental responsibility, and continuous operational improvement.



Direct (Scope 1) GHG Emissions (GRI 305-1)

CLOUD ADS reported 4.83 tCO₂e of Scope 1 emissions during FY2025–2026 from diesel combustion in DG sets, company vehicles, and refrigerant leakage from HVAC systems. Fuel monitoring, preventive maintenance, and refrigerant management initiatives support operational efficiency, reduced direct emissions, and climate mitigation performance.

Energy Indirect (Scope 2) GHG Emissions (GRI 305-2)

CLOUD ADS reported 22.60 tCO₂e of Scope 2 emissions resulting from purchased electricity consumption. Electricity supports printing equipment, HVAC operations, lighting, and office systems. Emissions were calculated using CEA India Grid emission factors. Energy efficiency initiatives and renewable energy evaluation support reduced electricity-related emissions.

Other Indirect (Scope 3) GHG Emissions (GRI 305-2)

CLOUD ADS recorded 138.45 tCO₂e of Scope 3 emissions, representing the largest share of its carbon footprint. Major contributors included purchased materials, logistics, employee commuting, waste disposal, and business travel. Supplier engagement, sustainable procurement, digital workflows, and awareness programs support reduction of value-chain emissions.



Reduction of GHG Emissions (GRI 305-4)

CLOUD ADS implements emission reduction initiatives including LED upgrades, energy optimization, digital operations, HVAC maintenance, waste segregation, recycled paper promotion, and supplier engagement. Future plans include renewable electricity adoption, rooftop solar assessment, low-carbon logistics planning, equipment upgrades, and SBTi-aligned climate targets.

Waste Generated (GRI 306-3)

CLOUD ADS generated approximately 3 tons of waste during FY2025–2026, including paper waste, packaging residues, and mixed operational waste. Waste management practices emphasize segregation, recycling, digital processes, controlled material use, and responsible disposal measures supporting environmental protection and improved resource efficiency.

Waste Diverted from Disposal (ODS) (GRI 306-4)

CLOUD ADS supports waste diversion through recycling, paper reuse, digital approvals, reduced paper dependency, and operational awareness initiatives. Waste segregation practices help minimize landfill disposal, strengthen circular resource management, reduce environmental impacts, and improve sustainability performance across printing and administrative operations.

Waste Directed to Disposal (GRI 306-5)

Non-recyclable operational waste generated by CLOUD ADS is managed through authorized disposal processes. Waste streams include mixed waste, consumable residues, and paper by-products. The organization continuously seeks to reduce disposal volumes through recycling, segregation, digital transformation, resource optimization, and strengthened waste management practices.



New Suppliers Screened Using Environmental Criteria (GRI 308-1)

CLOUD ADS integrates environmental considerations into supplier selection and procurement practices. Suppliers are encouraged to demonstrate environmental compliance, responsible sourcing, legal adherence, and sustainability awareness. Supplier evaluation supports environmentally responsible procurement, improved supply chain resilience, and stronger alignment with organizational ESG objectives.

Negative Environmental Impacts in the Supply Chain and Actions Taken (GRI 308-2)

CLOUD ADS addresses environmental risks within the supply chain through supplier engagement, sustainability communication, responsible sourcing, and procurement controls. The organization promotes environmental awareness, resource efficiency, and corrective actions where necessary. Continuous monitoring and supplier collaboration support improved environmental performance across value-chain activities.

SOCIAL



New Employee Hires and Employee Turnover (GRI 401-1)

CLOUD ADS promotes fair and responsible employment practices supporting workforce stability, employee welfare, and organizational growth. Recruitment processes focus on competency, qualifications, equal opportunity, and ethical hiring. Workforce management emphasizes employee engagement, retention, professional development, workplace inclusivity, and sustainable human capital practices supporting operational performance.

Benefits Provided to Full-Time Employees (GRI 401-2)

CLOUD ADS supports employee welfare through compensation systems, safe working conditions, training opportunities, communication mechanisms, and workplace support programs. Employee benefits contribute toward job satisfaction, operational productivity, well-being, and workforce stability. The organization aims to maintain a supportive environment aligned with ESG and responsible employment commitments.

Occupational Health and Safety Management System (GRI 403-1)

CLOUD ADS maintains occupational health and safety practices focused on hazard awareness, preventive controls, equipment maintenance, workplace monitoring, emergency preparedness, and safe operational procedures. Safety measures are integrated across printing operations, administration, and facility management. Employee awareness programs strengthen workplace safety culture and responsible operational conduct.



Hazard Identification, Risk Assessment, and Incident Investigation (GRI 403-2)

CLOUD ADS implements procedures to identify hazards, assess operational risks, and support preventive safety management. Risk evaluations consider equipment operation, electrical systems, ergonomics, HVAC activities, and printing processes. Reporting mechanisms, incident investigations, corrective actions, and continuous improvement practices strengthen employee protection and workplace safety performance.

Promotion of Worker Health (GRI 403-6)

CLOUD ADS promotes employee health and well-being through workplace awareness, hygiene practices, ergonomics, preventive health measures, and safe operational conduct. Employee participation in health initiatives supports morale, productivity, and workforce management. Health-focused practices contribute toward reduced workplace risks, employee engagement, and improved organizational performance.

Average Hours of Training per Employee (GRI 404-1)

CLOUD ADS supports employee capability development through training in technical operations, workplace safety, ESG awareness, compliance, digital systems, and professional skills. Continuous learning initiatives strengthen operational competencies, sustainability understanding, employee engagement, adaptability, and organizational performance within a changing business and operational environment.

Programs for Upgrading Employee Skills and Transition Assistance Programs(GRI 404-2)

CLOUD ADS promotes workforce development through programs supporting skill enhancement, professional growth, sustainability awareness, operational training, safety education, and digital process familiarization. Employee development initiatives strengthen competencies, innovation, responsible workplace practices, and organizational resilience while contributing toward sustainable business performance and employee engagement.

Diversity of Governance Bodies and Employees (GRI 405-1)

CLOUD ADS supports diversity, equal opportunity, and inclusive workplace practices across recruitment, employment, and professional development activities. Employment decisions are based on competence, ethical standards, and business requirements. Respectful workplace behavior, employee participation, and collaborative culture contribute toward innovation, engagement, and balanced organizational performance.

Incidents of Discrimination and Corrective Actions Taken (GRI 406-1)

CLOUD ADS maintains a workplace culture based on dignity, mutual respect, and non-discrimination principles. Policies prohibit harassment, bias, unfair treatment, and inappropriate conduct. Employees are encouraged to report concerns through grievance mechanisms. Governance measures support investigation, accountability, corrective actions, and responsible workplace behavior.

Employee Training on Human Rights Policies or Procedures (GRI 412-2)

CLOUD ADS supports responsible labor practices and respect for human rights across operational and workplace activities. Human rights considerations include equal opportunity, ethical employment practices, workplace dignity, non-harassment principles, employee welfare, and responsible stakeholder conduct. Awareness initiatives help employees understand organizational expectations regarding respectful behavior, ethical treatment, and workplace responsibilities. The organization seeks to strengthen socially responsible operations by embedding human rights awareness into governance, workforce management, and organizational culture.

Operations with Local Community Engagement, Impact Assessments, and Development Programs (GRI 413-1)

CLOUD ADS recognizes the importance of maintaining positive relationships with surrounding communities and stakeholders. The organization contributes through responsible operations, employment generation, ethical business practices, supplier engagement, environmental responsibility, and sustainability awareness initiatives. Community considerations are reflected in operational management, compliance practices, resource efficiency initiatives, and stakeholder communication. The organization seeks opportunities to strengthen community trust, responsible corporate citizenship, and long-term social value creation through sustainable business conduct.

Substantiated Complaints Concerning Breaches of Customer Privacy (GRI 418-1)

CLOUD ADS values customer trust and recognizes data protection, confidentiality, and secure information management as important organizational responsibilities. Governance controls support responsible handling of customer records, operational documentation, supplier information, and employee data. Employees are encouraged to maintain confidentiality, ethical information practices, and secure operational behavior. Information governance and awareness measures help minimize privacy risks, strengthen customer confidence, and support responsible business operations aligned with governance and sustainability commitments.



Sustainability Performance Data

(01st April 2025 to 31st March 2026)

S.No	Topic	Commitment	KPI	Unit	Measure
1	Working Conditions	Ensure good working conditions	Working conditions	Percentage	100
2	Labor Compliance	Comply with working time regulations	Percentage compliance with working time regulations	Percentage	100
3	Employee Welfare	Provide healthcare support to employees	Percentage of employees receiving healthcare support	Percentage	100
4	Energy & Emissions	Reduce energy consumption and GHGs	Energy consumption and GHGs	kWh	17666
5	Energy Efficiency Training	Train employees on energy efficiency	Percentage of employees trained on energy efficiency	Percentage	100
6	Energy Efficiency Equipment	Install energy-efficient equipment	Percentage of energy-efficient equipment installed	Percentage	100
7	Energy Monitoring	Track and record energy usage	Percentage of energy usage tracked and recorded	Percentage	100
8	Secure Collection	Ensure secure collection procedures	Percentage compliance with secure collection procedures	Percentage	100
9	Information Security Awareness	Improve employee awareness of information security	Percentage of employees aware of information security practices	Percentage	100
10	Supplier Sustainability	Evaluate suppliers for sustainability	Percentage of suppliers evaluated for sustainability	Percentage	100
11	Environmental Training	Train suppliers on environmental practices	Percentage of suppliers trained on environmental practices	Percentage	100
12	Environmental Advocacy	Promote environmental services and advocacy	Environmental services and advocacy	Count	7
13	Green Products	Increase eco-labeled/green products sold	Percentage of Ecolabeled / Green Products Sold	Percentage	100
14	Sustainable Products	Expand sustainable product offerings	Percentage of sustainable product offerings	Percentage	71
15	Workplace Ethics	Prevent discrimination and harassment	Discrimination and Harassment	Count	0
16	Fair Recruitment	Ensure fair recruitment procedures	Percentage compliance with fair recruitment procedures	Percentage	100
17	Harassment Reduction	Reduce workplace harassment incidents	Percentage reduction in workplace harassment incidents	Percentage	92
18	Anti-Bribery	Eliminate bribery incidents	Number of bribery incidents	Count	0
19	Gift Policy Compliance	Ensure compliance with gifts and hospitality policy	Percentage compliance with gifts and hospitality policy	Percentage	100
20	GHG Emissions	Monitor gross Scope 1 GHG emissions	Total gross Scope 1 GHG emissions	MT of CO2e	4.83
21	Environmental Participation	Encourage participation in environmental programs	Percentage of employees participating in environmental programs	Percentage	88
22	Climate Disclosure	Complete climate disclosures	Percentage of climate disclosures completed	Percentage	100

Sustainability Performance Data

(01st April 2025 to 31st March 2026)

S.No	Topic	Commitment	KPI	Unit	Measure
23	Health & Safety	Maintain employee health and safety	Employee Health and safety	Count	0
24	Workplace Injuries	Reduce lost work hours due to injuries/ill health	Number of Hours lost to work related injuries, fatalities, and ill health	Hours	0
25	Workplace Safety	Reduce days lost due to injury	Number of days lost due to injury	Days	0
26	PPE Compliance	Ensure compliance in PPE usage	Percentage compliance in PPE usage	Percentage	100
27	Fire Safety	Prevent fire/electrical incidents	Number of fire/electrical incidents	Count	0
28	Supplier Code of Conduct	Ensure suppliers sign supplier code of conduct	Percentage of targeted suppliers who have signed the supplier code of conduct	Percentage	100
29	Supplier Audits	Conduct sustainability on-site audits	Percentage or number of targeted suppliers covered by a sustainability on-site audit	Percentage	100
30	Supplier Assessments	Conduct sustainability assessments	Percentage or number of targeted suppliers covered by a sustainability assessment	Percentage	100
31	Waste Management	Manage waste generation	Waste	Liters	1643.7
32	Recycling	Recycle cartons	Percentage of cartons recycled	Percentage	100
33	Office Waste Recycling	Increase office waste recycling	Percentage of office waste recycled	Percentage	85
34	Career Development	Support career management and training	Career management and training	Percentage	100
35	Employee Training	Increase training hours per employee	Average Number of Hours of Training Per Employees	Hours	43
36	Individual Training	Ensure employees complete individual training	Percentage of employees completing individual training	Percentage	100
37	Employee Onboarding	Ensure new employees complete onboarding	Percentage of new employees completing onboarding	Percentage	100

This report is prepared in accordance with GRI standards (2021).

GRI No	Content	page No
GRI 1-5	Foundational Standards	
GRI 1-5	Statement of Use	9
GRI 2	General Disclosures	
GRI 2-1	Organizational Details	26
GRI 2-2	Entities Included in Sustainability Reporting	26
GRI 2-3	Reporting Period, Frequency and Contact Point	26
GRI 2-4	Restatements of Information	26
GRI 2-5	External Assurance	26
GRI 2-9	Governance Structure and Composition	26
GRI 2-23	Policy Commitments	26
GRI 2-29	Approach to Stakeholder Engagement	26
GRI 3	Material Topics	
GRI 3-1	Process to Determine Material Topics	26
GRI 3-2	List of Material Topics	26
GRI 3-3	Management of Material Topics	27
GRI 201	Economic Performance	
GRI 201-1	Direct Economic Value Generated and Distributed	29
GRI 201-2	Climate-Related Risks	29
GRI 203	Indirect Economic Impacts	
GRI 203-1	Infrastructure Investments and Services Supported	29

GRI No	Content	page No
GRI 204	Procurement Practices	
GRI 204-1	Proportion of Spending on Local Suppliers	29
GRI 205	Anti-Corruption	
GRI 205-1	Operations Assessed for Risks Related to Corruption	29
GRI 205-2	Communication and Training About Anti-Corruption Policies and Procedures	29
GRI 206	Anti-Competitive Behaviors	
GRI 206-1	Legal Actions for Anti-Competitive Behavior, Anti-Trust, and Monopoly Practices	29
GRI 207	Tax	
GRI 207-1	Approach to Tax	29
GRI 301	Materials	
GRI 301-1	Materials Used by Weight or Volume	31
GRI 301-2	Recycled Input Materials Used	31
GRI 302	Energy (Additional Energy Disclosures)	
GRI 302-1	Energy Consumption within the Organization	31
GRI 302-4	Reduction of Energy Consumption	31
GRI 303	Water and Effluents	
GRI 303-1	Interactions with Water as a Shared Resource	31
GRI 303-5	Water Consumption	31

This report is prepared in accordance with GRI standards (2021).

GRI No	Content	page No
GRI 305	Emissions	
GRI 305-1	Direct (Scope 1) GHG Emissions	32
GRI 305-2	Energy Indirect (Scope 2) GHG Emissions	32
GRI 305-3	Other Indirect GHG Emissions (Scope 3)	32
GRI 305-4	Reduction of GHG Emissions	32
GRI 306	Waste	
GRI 306-3	Waste Generated	32
GRI 306-4	Waste Diverted from Disposal	32
GRI 306-5	Waste Directed to Disposal	32
GRI 308	Supplier Environmental Assessment	
GRI 308-1	New Suppliers Screened Using Environmental Criteria	32
GRI 308-2	Negative Environmental Impacts in the Supply Chain and Actions Taken	32
GRI 401	Employment	
GRI 401-1	New Employee Hires and Employee Turnover	34
GRI 401-2	Benefits Provided to Full-Time Employees	34
GRI 403	Occupational Health & Safety	
GRI 403-1	Occupational Health and Safety Management System	34

GRI No	Content	page No
GRI 403-2	Hazard Identification, Risk Assessment, and Incident Investigation	34
GRI 403-6	Promotion of Worker Health	34
GRI 404	Training and Education	
GRI 404-1	Average Hours of Training per Employee	34
GRI 404-2	Programs for Upgrading Employee Skills and Transition Assistance Programs	34
GRI 405	Diversity and Equal Opportunity	
GRI 405-1	Diversity of Governance Bodies and Employees	34
GRI 406	Diversity, Equity and Inclusion	
GRI 406-1	Incidents of Discrimination and Corrective Actions Taken	34
GRI 412	Human Rights Assessment	
GRI 412-2	Employee Training on Human Rights Policies or Procedures	35
GRI 413	Local Communities	
GRI 413-1	Operations with Local Community Engagement, Impact Assessments, and Development Programs	35
GRI 418	Information Security	
GRI 418-1	Substantiated Complaints Concerning Breaches of Customer Privacy	35

INDEPENDENT ASSURANCE STATEMENT

This CSR report has been independently verified by BMQR, a third-party assurance provider, in accordance with ISO 17029:2019. The assurance engagement covered a Type 2 assurance of the information and data disclosed within this report.

The scope of the assurance included verifying the accuracy, completeness, and reliability of the disclosures made under all relevant sections of the GRI Standards. The assurance provider conducted the engagement based on applicable assurance principles and issued an assurance statement confirming the integrity of the disclosed information.

Name of Assurance Provider : BMQR Certifications Pvt Ltd,
Standard Used : ISO 17029:2019 and GRI.
Type of Assurance : Type 2
Web URL : www.bmqrassurance.com



Authorized Representative (Assurer)
Name : S. Elango
Designation : Associate Certified Sustainability Assurance Practitioner
Certificate No : AA1000 (ACSAP) C.N: A09122401
Signature : 